



Original operating  
manual



# OPERATING MANUAL

## MANUAL PALLET TRUCK TRP0007

**TOTALSOURCE®**

04/2021 - V01  
from serial n°  
2021902491



BG	Bulgarian	Можете да намерите това ръководство на Вашия език чрез линка, посочен по – долу.
CS	Czech	Tento návod najdete ve svém jazyce prostřednictvím odkazu níže.
DA	Danish	Du kan finde denne vejledning på dit sprog via nedenstående link.
DE	German	Sie finden diese Bedienungsanleitung in Ihrer Sprache unter folgendem Link.
EL	Greek	Μπορείτε να βρείτε αυτό το εγχειρίδιο στη γλώσσα σας μέσω του παρακάτω συνδέσμου.
EN	English	You can find this manual in your language via below link.
ES	Spanish	Encontrarás este manual en su propio idioma a través del siguiente enlace.
ET	Estonian	Oma emakeelse juhendi leiata allolevalt lingilt.
FI	Finnish	Löydät tämän manuaalin omalla kielelläsi alla olevan linkin takaa.
FR	French	Vous trouverez ce manuel dans votre langue via le lien ci-dessous.
GA	Irish	Tá an lámhleabhar seo ar fáil i do theanga tríd an nasc thíos.
HR	Croatian	Ovaj priručnik mozete pronaci na svom jeziku putem donjeg linka.
HU	Hungarian	Ez a kézikönyv az Ön nyelvéen az alábbi link alatt található.
IS	Icelandic	Hægt er að finna þessa handbók á þínu tungumáli á tenglinum hér að neðan.
IT	Italian	Cliccando sul link sottostante troverai il manuale nella tua lingua.
LT	Lithuanian	Šį vadovėlį savo kalba rasite spustelėję žemiau esančią nuorodą.
LV	Latvian	Rokasgrāmatu latviešu valodā Jūs varat atrast izmantojot zemāk esošo saiti.
MT	Maltese	Tista' ssib dan il-manwal bil-lingwa tieghek permezz tal-link ta' hawn taht.
NL	Dutch	Je vindt deze handleiding in jouw taal via onderstaande link.
NO	Norwegian	Du finner denne håndboken på ditt språk via linken nedenfor.
PL	Polish	Niniejsza instrukcja obsługi dostępna jest w Twoim języku za pośrednictwem poniższego linku.
PT	Portuguese	Pode encontrar este manual no seu idioma através do link abaixo.
RO	Romanian	Puteți găsi acest manual în limba dvs. prin link-ul de mai jos.
SK	Slovak	Manuál vo vašom jazyku môžete nájsť v priloženom vysvietenom riadku.
SL	Slovenian	Ta priročnik najdete v svojem jeziku preko spodnje povezave.
SV	Swedish	Du kan hitta denna manual på ditt språk via länken nedan.
TR	Turkish	Bu kılavuzu aşağıdaki bağlantıdan kendi dilinizde bulabilirsiniz.



[www.tvh.com/TRP0007\\_RV01](http://www.tvh.com/TRP0007_RV01)

Thank you for using our product. For your safety and to ensure a correct operation, we would like to bring to your attention some aspects of this manual:

- This booklet supplies useful instructions for the correct operation and maintenance of the product. It is therefore necessary to pay the utmost attention to all of the paragraphs that illustrate the most simple and secure way to operate and use this product.
- This booklet must be considered an integral part of the machine and must be included with the deed of sale.
- Neither this publication, nor part of it, can be reproduced without written authorisation on the part of the manufacturer.
- All of the information reported herein is based on data available at the moment of printing; the manufacturer reserves the right to carry out modifications to its own products at any moment, without notice and without incurring in any sanction. It is therefore suggested to always check for possible updates.

The person responsible for the use of the product must make sure that all of the safety rules in force in the country of its use are applied, to guarantee that the equipment is used in conformity with the use for which it is destined and to avoid any dangerous situation for the user.

The following warning signs are used in this manual to warn you for dangers and risks:



Informative, be careful.



Warning, can lead to injury and damage if instructions aren't followed.



Danger, can lead to serious or fatal injury and serious damage if instructions aren't followed.

The following conventions are used in this manual:



1	Right
2	Left
3	Front
4	Back

# TABLE OF CONTENTS

<b>1.</b>	<b>INTRODUCTION.....</b>	<b>6</b>
<b>2.</b>	<b>DESCRIPTION.....</b>	<b>7</b>
2.1.	Technical data .....	7
2.2.	Main components of the product.....	8
2.3.	Placement of the decals .....	8
2.4.	Type plate.....	8
<b>3.</b>	<b>SAFETY INSTRUCTIONS.....</b>	<b>9</b>
3.1.	Explanation of the safety decals .....	9
3.2.	General safety instructions .....	10
<b>4.</b>	<b>TRANSPORT AND STORAGE.....</b>	<b>11</b>
4.1.	Parking the pallet truck .....	11
4.2.	Transporting the pallet truck .....	11
<b>5.</b>	<b>ASSEMBLY AND INSTALLATION .....</b>	<b>12</b>
5.1.	Packing list.....	12
5.2.	Safety instructions for assembly and installation of the product .....	12
5.3.	Required material for assembly.....	12
5.4.	Assembly of the tiller handle and commissioning the pallet truck .....	12
5.5.	Assembly of the foot brake (option).....	14
<b>6.</b>	<b>OPERATION.....</b>	<b>15</b>
6.1.	Safety instructions for operating the product .....	15
6.2.	Operating instructions .....	15
<b>7.</b>	<b>MAINTENANCE.....</b>	<b>19</b>
7.1.	Safety instructions for the maintenance of the pallet truck.....	19
7.2.	Maintenance schedule.....	19
7.3.	Maintenance instructions .....	19
<b>8.</b>	<b>TROUBLESHOOTING .....</b>	<b>22</b>
<b>9.</b>	<b>FINAL DECOMMISSIONING AND DISPOSAL .....</b>	<b>23</b>
<b>10.</b>	<b>ANNEXES .....</b>	<b>24</b>
10.1.	CE-certificate.....	24
10.2.	Hydraulic diagram.....	26
10.3.	Spare parts list .....	27
10.4.	Replacement of the wheels .....	27

## 1. INTRODUCTION

This pallet truck is a manually operated pallet truck designed to lift and transport pallets on hard and even surfaces. It can lift open-bottom or diagonal board pallets. Suitable ambient temperature is 5 °C up to 40 °C.

If the pallet truck is used for extended periods of time in ambient temperatures below 5 °C, cold storage, or in extreme conditions with temperature and humidity changes, you must contact your dealer and obtain permission from the manufacturer.

We guarantee a long period of trouble free operation if the unit is operated and maintained correctly.



This pallet truck may be unsafe/hazardous if adequate maintenance is neglected. Therefore, adequate maintenance facilities, trained personnel and procedures should be provided.

Maintenance and inspection shall be performed in conformity with the following practices:

1. A scheduled planned maintenance, lubrication and inspection system should be followed (see maintenance instructions in chapter 7).
2. Only qualified and authorised personnel shall be permitted to maintain, repair, adjust, and inspect the pallet truck.
3. Modifications and additions which affect capacity and safe operation shall not be performed by the customer or user without the manufacturer's, prior written approval. Capacity, operation and maintenance plates or decals shall be changed accordingly.
4. If modifications are made without the written approval of the manufacturer, the warranty will no longer apply.

This manual contains all the necessary information on the installation and operation of the pallet truck. Some of the maintenance operations should only be carried out by professional technicians. If you require this information and the maintenance steps, please contact your dealer.

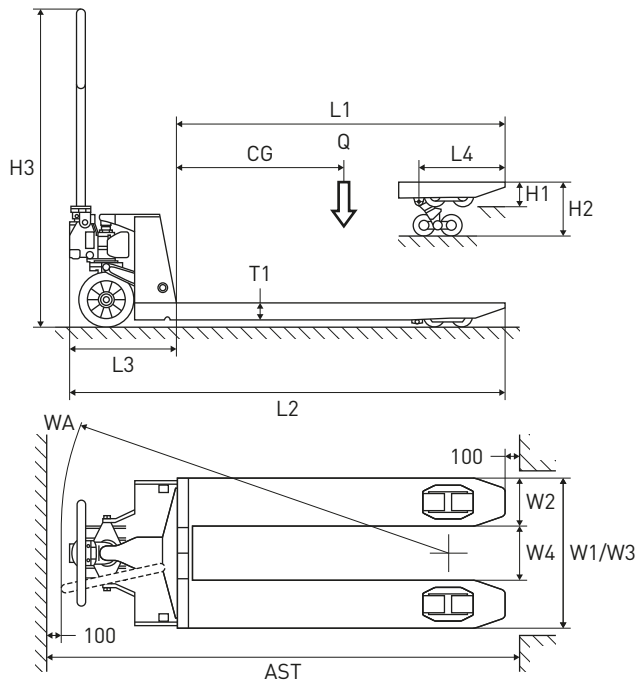
## 2. DESCRIPTION

### 2.1. Technical data



Always check the type plate for the correct information.

Model	TRP0007
Load capacity (kg)	2500
Material of the pump	Painted steel (casted)
Total length (L2) (mm)	1550
Length of the forks (L1) (mm)	1150
Width across the forks (W1/W3) (mm)	540
Minimum height (H1) (mm)	80
Lifting height (H2) (mm)	200
Centre of gravity (CG) (mm)	575
Material of the steering wheels	Rubber
Material and number of fork wheels	Tandem/polyurethane
Type of brake	no brake
Material of the pallet truck	Steel
Weight (kg)	71



2.2. Main components of the product



N°	Component
1	Tiller with handle
2	Pump unit
3	Steering wheels
4	Frame
5	Fork wheels

2.3. Placement of the decals

The safety and warning labels should be placed as described in the pictures below.  
See chapter 3 for the explanation of the safety warnings. If the decals are damaged or missing, replace them.



N°	Decal	Explanation	Reference
1	<b>TOTALSOURCE®</b>	Brand decal	166TA2311

2.4. Type plate



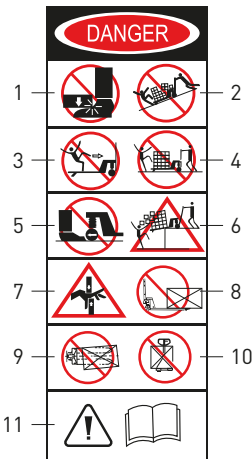
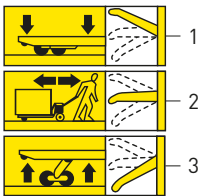
N°	Type plate	Explanation				
2		1 Type of pallet truck				
		2 Serial number				
		3 Capacity of the pallet truck				
1	<table><tr><td>Type of pallet truck</td><td>xxxx</td><td>Fork length</td><td>xxxx mm</td></tr></table>	Type of pallet truck	xxxx	Fork length	xxxx mm	4 Weight of the pallet truck
Type of pallet truck	xxxx	Fork length	xxxx mm			
2	<table><tr><td>Serial n°</td><td>xxxxxx</td><td>Width over forks</td><td>xxx mm</td></tr></table>	Serial n°	xxxxxx	Width over forks	xxx mm	5 Name and address of the manufacturer
Serial n°	xxxxxx	Width over forks	xxx mm			
3	<table><tr><td>Capacity</td><td>xxxx kg</td><td>Wheels</td><td>xxx</td></tr></table>	Capacity	xxxx kg	Wheels	xxx	6 Length of the forks
Capacity	xxxx kg	Wheels	xxx			
4	<table><tr><td>Net weight</td><td>xx kg</td><td>Year of manufacturing</td><td>xxxx</td></tr></table>	Net weight	xx kg	Year of manufacturing	xxxx	7 Width across the forks
Net weight	xx kg	Year of manufacturing	xxxx			
5	<div><div>Manufactured outside the EU for: TVH PARTS HOLDING NV Brabantstraat 15 · 8790 Waregem · Belgium</div><div>CE</div></div>	8 Wheel combination (fork wheels/steering wheels)				
		9 Year of manufacture				
		10 CE logo				



### 3. SAFETY INSTRUCTIONS

#### 3.1. Explanation of the safety decals

If the decals are damaged or missing, please replace them.

N°	Decal	Explanation	Reference
3		Read the manual before use	138TA3912
4		Maximum load capacity: 2500 kg	166TA2312
5		<ol style="list-style-type: none"> <li>1. Foot crushing hazard, wear safety shoes</li> <li>2. Do not use on a slope</li> <li>3. Do not use to lift or transport people</li> <li>4. Keep other persons at a distance while operating the pallet truck</li> <li>5. Do not put feet in front of rolling wheels, wear safety shoes</li> <li>6. Keep other persons at a distance and be aware of loading bridges and docks to prevent the pallet truck or the load from falling down</li> <li>7. Hand crushing hazard, wear safety gloves and be careful where you put your hands</li> <li>8. The load must cover the full length and width of the forks</li> <li>9. The load must be centred on the forks</li> <li>10. The centre of gravity of the goods should be in the centre of the two forks</li> <li>11. Read the manual before using the pallet truck</li> </ol>	166TA2313
6		<p>Operating instructions handle:</p> <ol style="list-style-type: none"> <li>1. Handle up: lower the forks</li> <li>2. Neutral: driving position</li> <li>3. Handle down: pump up</li> </ol>	163TA1676

### 3.2. General safety instructions



- The operator should read all warning signs and instructions in the manual and on the pallet truck before using it.
- Do not operate a pallet truck unless you have been trained or authorised to do so.
- Do not exceed the maximum capacity.
- The operator should wear safety shoes and gloves when using or maintaining the pallet truck.
- It is forbidden to carry or lift passengers.
- The pallet truck can't be used if it's damaged or when faults appear.
- Do not use the pallet truck on a slope. It is designed to be used on even and level floors.
- The weight of the goods should be distributed over the two forks, do not use only one fork. The centre of gravity of the goods should be in the centre of the two forks.
- Don't balance the pallet truck on the left or right side.
- Be aware of hazardous situations like ledges or potholes, bumps and floor obstructions, debris, overhead obstructions and high-voltage conductors, inadequate surface support to withstand all load forces imposed by the machine.
- Only release the handle once the pallet truck has come to a complete stop.
- When transporting goods, raise the forks as little as possible. Transport with raised forks should be carried out slowly and for as short a distance as possible.
- Do not operate a pallet truck unless you are of age.
- The person responsible for the use of the product must make sure that all of the safety rules in force in the country of its use are applied, to guarantee that the equipment is used in conformity with the use for which it is destined and to avoid any dangerous situation for the user.



TVH Parts Holding NV cannot envisage each possible circumstance that may result in danger. Therefore the warnings given in this publication and which appear on the equipment are not exhaustive. In the event that equipment, procedures, work methods or working techniques are used that are not specifically advised by the TVH company, it is necessary to make sure that there is no danger to the operator or other people.



The pallet truck is equipped with a pressure valve and an overflow valve:

- The pressure valve on the machine is factory-set for the maximum load capacity of 2500 kg or according to the capacity mentioned on the pallet truck.
- The pressure relief valve is set to avoid the risk of overloading. When the machine is overloaded, the overflow valve opens to prevent lifting, because that could result in a dangerous situation.

## 4. TRANSPORT AND STORAGE

### 4.1. Parking the pallet truck



Park the pallet truck securely in a dry and frost-free environment. Do not park on an inclined surface. Always completely lower the forks. If the pallet truck is parked for longer than a month, lubricate the necessary parts, follow the instructions in chapter 7.

Safely park the pallet truck by following these steps:

1. Bring the forks to their lowest position by pulling the lever upwards.
2. Store the pallet truck on a firm, flat floor, without any load, and in a dry area.
3. When the pallet truck is stored in a trailer or vehicle, secure the pallet truck to the trailer or vehicle.
4. The pallet truck is parked.

### 4.2. Transporting the pallet truck



Make sure that the truck is in a secured and stable position, ensuring that it will not suddenly move.

Safely transport the pallet truck by following the next steps:

1. Check the type plate to know the weight of the pallet truck. Select the appropriate material according to the weight. (lift truck, chains and slings)
2. Attach the slings to the pallet truck as indicated in the picture on the right.
3. Lift the pallet truck with a crane or lift truck. Only use a crane or lift truck with sufficient capacity.
4. Put the pallet truck onto a pallet with sufficient capacity.
5. Secure the pallet truck onto the pallet.



## 5. ASSEMBLY AND INSTALLATION

### 5.1. Packing list

Description	Amount	Reference
Handle with chain	1	144TA6476
Axle	1	144TA6459
Elastic pin	1	144TA6460
Frame	1	Contact your dealer
Operating manual	1	166TA6847
Spare parts list	1	166TA6506

### 5.2. Safety instructions for assembly and installation of the product



- Wear safety gloves and safety shoes when assembling the pallet truck.
- Position the pallet truck on a level surface.
- Be careful when removing the packaging.

### 5.3. Required material for assembly

- Hammer
- Utility knife

### 5.4. Assembly of the tiller handle and commissioning the pallet truck

1. Remove the cardboard packaging from the lever.

**Attention:** the axle for the installation of the lever is included in the lever



2. Take the lever, the axle and the split pin.



3. Insert the axle in the pump through the holes in the pump and through the holes of the lever from right to left.



4. Now secure the axle with the elastic pin.



5. Remove the safety bar on the pump.



6. Take the chain in the lever and run it through the hole of the axle.



7. Secure the chain to the lever of the lowering valve.



8. If the pump functions unsatisfactorily: loosen the nut and adjust by tightening or loosening the screw. After performing the adjustment, retighten the nut.



9. Ready for use!



## 5.5. Assembly of the foot brake (option)

1. Demount the wheel, see annex 4.



2. Beat out the spring pin.



3. Slide the wheel axle out of the pump.



4. Slide the foot brake onto the pump and secure it with the supplied screw.



5. Ready for use!



## 6. OPERATION

### 6.1. Safety instructions for operating the product



- A damaged or malfunctioning machine must never be used. If damage or malfunctions are discovered during daily inspection or function tests, the machine must be tagged and removed from service.
- The operator may not wear any loose objects, such as necklaces, rings, scarves ... as they may become entangled in the machine and thus cause harm to the operator.
- Do not operate a pallet truck unless you have been trained or authorised to do so.
- Do not exceed the maximum load capacity.
- The operator should wear safety shoes and gloves when using the pallet truck.
- When goods are being transported or lifted, bystanders should keep a minimum distance of 1 metre.
- Make sure that the flooring can support the combined weight of the pallet truck and its load.
- Be aware of hazardous situations like ledges or potholes, bumps and floor obstructions, debris and overhead obstructions.



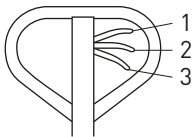
- When loading and unloading the pallet truck, always do this with the forks in the lowest position.
- In normal conditions the pallet truck moves without a lot of effort or noises.
- If the wheels are dragging, they are probably blocked by dirt in or around the axles.
- If the forks descend automatically, check the troubleshooting in chapter 8.
- Don't balance the pallet truck on the left or right side. Otherwise there is a risk that the forks will bend.

### 6.2. Operating instructions

Please see chapter 7 for the daily maintenance schedule.

#### 1. Positions of the operating lever:

On the drawbar of the pallet truck, you can find the control handle which can be regulated in three positions:



1. UP = to lower the forks
2. NEUTRAL = to move the load
3. LOWER = to pump up the forks

## **2. Loading and unloading the pallet truck:**

1. Position and level the forks so that they are in line with the pallet inlets.
2. Slowly insert the forks into the inlets until the pallet hits the back of the forks.
3. Pump up the forks to lift the pallet off the ground.
4. Move backwards and pay attention to the load to make sure it's stable.
5. Transport the goods with the forks raised as little as possible.
6. Position the pallet truck in line with the storage space.





7. Move the goods into the storage space.



8. Unload the pallet truck by bringing the forks to their lowest position.



9. Pull back the pallet truck, the pallet is now in the desired space.



10. If the job is finished, safely store the pallet truck (see chapter 4).

If the forks of the pallet truck won't lower or lift, see the following steps to adjust the lever.

### 3. Adjustments of the operating lever

Adjustment of neutral position:

1. Place the operating lever in the normal position.
2. Push the tiller handle to the lowest position.
3. Regulate the adjusting nut and screw on the linkage so that, when the tiller handle is pumped, the forks neither raise nor lower.



Adjustment of lifting position:

1. Place the operating lever in the lifting position.
2. Pump the tiller handle; the linkage is not operated, the forks raise and tilt while the release valve remains completely closed.
3. If the forks do not lift, regulate the adjusting nut and screw until normal lift and action is obtained.



Adjustment of lowering position:

1. Pull the operating lever in the lowering position.
2. The linkage is operated, causing the discharge and pressure valve to open completely, and the forks to lower.
3. If the forks don't lower, regulate the adjusting nut and screw until a normal lowering action is attained.



#### Option: foot brake

The pallet truck can be equipped with a foot brake on the steering wheels. For assembling instructions, see chapter 5. When applied, the foot brake prevents the pallet truck from moving.

To apply the brake, push the brake down with your feet.  
To release the brake, pull the brake up.

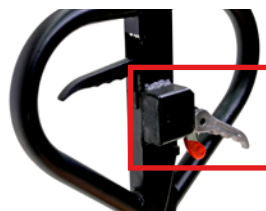


#### Option: handbrake (for all models)

When the pallet truck is equipped with a handbrake there is an extra lever on the handle.

To apply the brake, push the grey handle upwards.

To release the brake, push the red and grey handle down.



## 7. MAINTENANCE

### 7.1. Safety instructions for the maintenance of the pallet truck



- No modifications or alterations which could affect capacity, stability or safety requirements of the pallet truck, but not limited to these examples, shall be made without the prior written approval of the original manufacturer, its authorised representative, or a successor thereof.
- Make sure that the truck is in a secured and stable position, ensuring that it will not suddenly move.
- The operator should wear safety shoes and gloves when using or maintaining the pallet truck.

### 7.2. Maintenance schedule

Task	D	W	M	6M
1. Cleaning		✓		
2. Daily maintenance check	✓			
3. Lubrication			✓	
4. Check oil level				✓

*D: daily, W: weekly, M: monthly, 6M: every 6 months*

### 7.3. Maintenance instructions

#### 1. Cleaning

When cleaning the machine, do not direct the jet onto bearings and seals, otherwise the grease will be washed out and the lifespan of the product will be shortened.

The environment in which the truck is used, determines the cleaning frequency. It is recommended to assess the need for cleaning based on the applicable rules in the company.

The pallet truck can be cleaned with warm water and maintenance cleaner (REF 165TA7474). After cleaning, wipe down the truck and lubricate the moving parts (see point 3 in this chapter).

## 2. Daily maintenance check

A daily maintenance check of the pallet truck can limit wear to a minimum:

- Check the wheels and axles for blockages. Remove the blockages if possible.
- Check the wheels for wear, cracks, flat spots or broken bearings. If you find anything, replace the wheels. See chapter 10.4 How to replace the wheels.
- Check if there are any damaged or loose bolts, nuts or cotter pins. Fasten them if necessary.
- Check for oil leaks.
- Check if the lifting and lowering functions work properly.
- Ensure that the instruction manual is complete, legible and available for reference.
- Ensure that all decals are legible and in place.
- Check the entire machine for damage, corrosion or cracks in structural components.



A damaged or malfunctioning machine must never be used. If damage or malfunctions are discovered during daily inspection or function tests, the machine must be tagged and removed from service.

## 3. Lubrication

Use engine oil or grease to lubricate all moving parts.



Oil and grease	Reference
Lubricating grease	107TA8448
Food grease	143TA6908
Multipurpose grease	165TA3769
Grease for food industry	152TA1875
Penetrating oil	144TA9266

## 4. Check oil level

Please check the oil level every six months. The oil capacity is about 0.3 l. Top up the fluid level in the rubber reservoir to 5 mm below the top; this must be done with the forks in the lowered position. Use the correct type of hydraulic oil according to the temperature conditions below.

Type oil	Reference
Hydraulic oil ISO VG32	141TA2734
Hydraulic oil ISO VG32 for extremely cold temperatures	165TA7512
Hydraulic oil SH32 for food industry	165TA7513

## Oil change



Changing the oil can only be done by a qualified service technician and according to the manufacturer's instructions.

### Draining the oil:

1. Lower the forks to the bottom position.
2. Remove the screw and turn the pallet truck on its side.
3. The oil now drains out of the hole (collect the waste oil in an oil receptacle).



### Filling up the oil:

1. Pour the oil in the hole.
2. Insert the screw into the hole of the reservoir.
3. Bleed the air from the pump unit.



### Bleed the air from the pump unit:

1. Set the handle in the LOWER position
2. Move the handle up and down several times

## 8. TROUBLESHOOTING

N°	Problem	Cause	Action
1	The forks can't be raised up to the maximum height	The level of hydraulic oil is too low	Add hydraulic oil, see chapter 7
2	The forks can't be raised	The level of hydraulic oil is too low	Add hydraulic oil, see chapter 7
		The oil contains impurities (for example water, sand, dust, rust ...)	Change the oil, see chapter 7
		The nut or screw were tightened too much, causing the pumping valve to stay open	Adjust the nut or screw
		Air enters the hydraulic oil	Bleed the air, see procedure in chapter 7
		Control lever is no longer adjusted correctly	Follow the procedure for adjusting the control lever in chapter 7
		Load is too heavy, pressure relief valve is activated	Reduce load
		Temperature is too low and the hydraulic oil has become too thick	Move truck to a warmer location and check intended use
3	The forks can't be lowered	The piston rod or pump body is deformed due to partial loading slanting to one side or due to overloading	Replace the piston rod or pump body
		The forks were kept in their highest position for a long time with the piston rod exposed, resulting in rust and causing the rod to jam	Lubricate the rod. Keep the forks in the lowest position when not in use, and pay more attention to the lubrication of the rod.
		The adjusting nut or screw is not in the correct position	Adjust the nut or the screw
		Control lever is no longer adjusted correctly	Follow the procedure for adjusting the control lever in chapter 6
		Obstacle located under truck, in fork mechanism ...	Remove the obstacle with caution
4	Leaks	Sealing parts are worn or damaged	Replace the parts, see spare parts list
		Some parts are cracked or slightly worn	
5	The forks descend without the release valve being operated	The impurities in the oil prevent the release valve from closing properly	Change the oil, see chapter 7
		Some parts of the hydraulic system are cracked or worn	Inspect and replace the worn parts, see spare parts list
		Air enters the hydraulic oil	Bleed the air, see procedure chapter 7
		Sealing parts are worn or damaged	Replace the seals, see spare parts list
		The adjusting nut or screw is not in the correct position	Adjust the nut or the screw
		Control lever is no longer adjusted correctly	Follow the procedure for adjusting the control lever in chapter 6

If none of these troubleshooting suggestions or solutions were helpful, please contact your local dealer or the manufacturer.

## 9. FINAL DECOMMISSIONING AND DISPOSAL

Final, proper decommissioning or disposal of the product must be performed in accordance with the regulations of the country in which the product is used. In particular, regulations governing the disposal of batteries, fuels and electronic and electrical systems must be observed.

Waste packaging should be sorted and put into solid dustbins according to the materials and needs to be collected by the local special environment protection bureau.

To avoid pollution, it's forbidden to throw away the waste randomly. To avoid pollution during the use of the product, the user should prepare some absorbing materials (scraps of wood or dry duster cloth) to absorb leaking fluids in time. To avoid secondary pollution to the environment, the used absorbing materials should be handed in at special departments of local authorities.

## 10. ANNEXES

### 10.1. CE-certificate



ORIGINAL DECLARATION

**EG-VERKLARING VAN OVEREENSTEMMING**  
**DÉCLARATION CE DE CONFORMITÉ**  
**EC DECLARATION OF CONFORMITY**  
**EG-KONFORMITÄTSEKLRÄRUNG**  
**DECLARACIÓN CE DE CONFORMIDAD**  
**DICHIARAZIONE CE DI CONFORMITÀ**

(IIA)

**De fabrikant, Le fabricant, The manufacturer, Der Hersteller, El fabricante, Il fabbricante:**

TVH Parts NV, Brabantstraat 15, B - 8790 Waregem

**Verklaart met betrekking tot het hierna beschreven MACHINE :**

**Déclare, concernant la MACHINE décrite ci-dessous :**

**Declares in connection with the MACHINERY described below :**

**Erklärt, hinsichtlich der nachfolgenden MASCHINE :**

**declara, sobre la MÁQUINA designada a continuación :**

**dichiara, in relazione alla MACCHINA di seguito descritta :**

Benaming / Dénomination / Denomination / : Manuele transpallet / transpalette manuele / Hand pallet truck /  
Bezeichnung / Denominación / Handhubwagen / Transpaleta manual / Tanspallet manuele ;  
Denominazione

Functie / Fonction / Function / Funktion / : Verplaatsen van een last / Déplacer une charge / Moving a load /  
Función / Funzione Umstellen einer Last / El traslado de una carga/ Spostamento di un carico

Merk / Marque / Brand / Marke / Marca : TotalSource

Type / Typ / Tipo: TRP0007

Model/ Modèle/ Modell/ Modelo: -

- dat het zelf het TECHNISCH DOSSIER samenstelt;  
qu'il constitue le DOSSIER TECHNIQUE en personne;  
that it draws up the TECHNICAL FILE itself;  
dass er selber die TECHNISCHEN UNTERLAGEN zusammenstellt;  
que elabora el EXPEDIENTE TÉCNICO en persona;  
che elabora il FASCICOLO TECNICO personalmente;
- dat de machine voldoet aan alle toepasselijke bepalingen van de hierna vermelde richtlijnen en geharmoniseerde normen;  
que la machine satisfait à l'ensemble des dispositions pertinentes des directives et normes harmonisées ci-dessous;  
that the machinery fulfills all the relevant provisions of the directives and harmonized standards stated herein below;  
dass Maschine allen einschlägigen Bestimmungen der nachstehenden Richtlinien und harmonisierten Normen entspricht;

**TVH PARTS HOLDING NV**

Brabantstraat 15 • 8790 Waregem • Belgium

T +32 56 43 42 11 • F +32 56 43 44 88 • info@tvh.com • www.tvh.com

BTW-BE 0822 308 590 • RLP-Gent - division Kortrijk 0822 308 590

BNP Paribas Fortis 001-6023731-10 • IBAN BE41 0016 0237 3110 • SWIFT/BIC GEBABEBB





ORIGINAL DECLARATION

que la máquina cumple todas las disposiciones aplicables de las Directivas y normas armonizadas citadas abajo;  
che la macchina è conforme a tutte le disposizioni pertinenti delle direttive e norme armonizzate elencate qui di seguito :

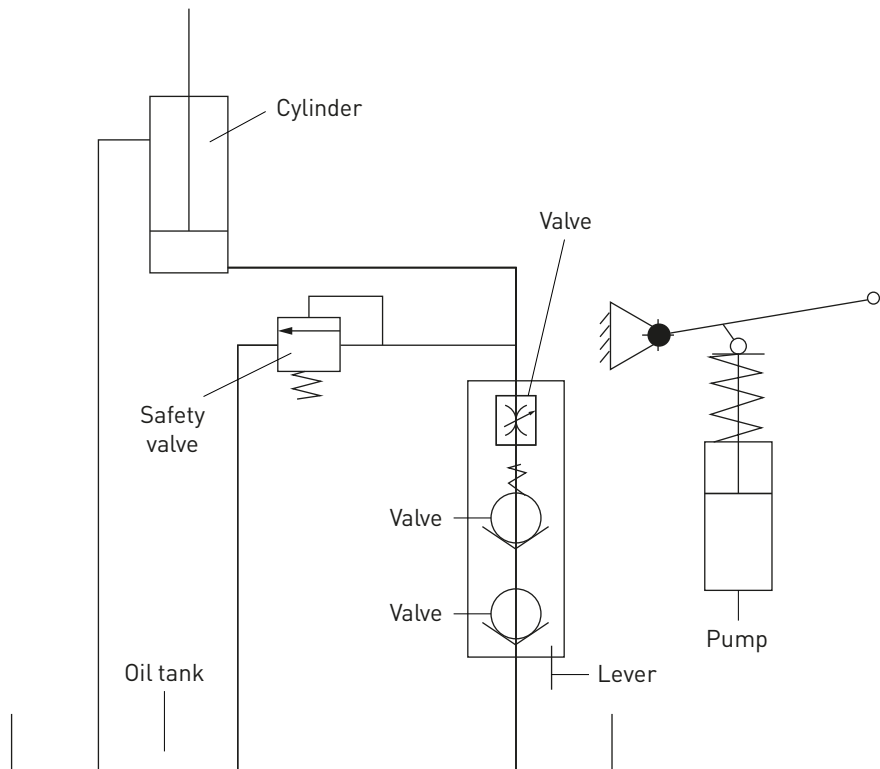
- o richtlijn 2006/42/EC en met de aanpassingen en integraties die daarop volgen.  
EN ISO 3691-5:2015
- o la Directive 2006/42/EC et les modifications et intégrations successives.  
EN ISO 3691-5:2015
- o Directive 2006/42/EC and subsequent modifications and integrations.  
EN ISO 3691-5:2015
- o die Richtlinie 2006/42/EC einschließlich nachfolgende Änderungen und Ergänzungen entspricht.  
EN ISO 3691-5:2015
- o la Directiva 2006/42/EC y sucesivas modificaciones e integraciones.  
EN ISO 3691-5:2015
- o le Direttive 2006/42/EC e successive modifiche e integrazioni.  
EN ISO 3691-5:2015

done at Waregem, (day, month, year)

**Guy VANDENDRIESSCHE**  
Chief Materials Officer  
TVH Parts Holding NV

**TVH PARTS HOLDING NV**  
Brabantstraat 15 • 8790 Waregem • Belgium  
T +32 56 43 42 11 • F +32 56 43 44 88 • info@tvh.com • www.tvh.com  
BTW-BE 0822 308 590 • RLP Gent • division Kenterijk 0822 308 590  
BNP Paribas Fortis 001-6023731-10 • IBAN BE41 0016 0237 3110 • SWIFT/BIC GEBABEBB

10.2. Hydraulic diagram



### 10.3. Spare parts list

The spare parts list is delivered together with this manual in the package. If it wasn't included in your package check the packing list in chapter 5 to order a new spare parts list.


### 10.4. Replacement of the wheels

#### 1. Replacement of the fork wheels

Required material:

- Hammer
- Mandrel
- New fork wheels



 Place some kind of support under the wheels, like a wooden block. This will allow you to work more comfortably when using the hammer.

1. Turn the pallet truck around.



2. Remove the 4 tension pins using a hammer and a small mandrel.



3. Remove the axle.



4. Install the new wheels and place the axle back in place.



5. Put the tension pins back in place, if necessary using a large mandrel for a larger striking surface.




6. Ready, now you can do the other side.

## 2. Replacement of the steering wheels

Required material:

- New snap ring
- Snap ring rod
- New steering wheels
- Hammer
- Mandrel



 The bearings are lubricated by default when they are delivered, but it never hurts to lubricate them again. Do check this before replacing the wheels.

1. Remove the protective cap.



2. Remove the snap ring using a snap ring rod.



3. Pull the wheel from the axle.



4. Push the new wheel on the axle and position the spacer of the old wheel on the new one (counterbore side on the outside).

5. Take a new snap ring



6. Position the snap ring using the snap ring rod.



7. Put the protective cap back in place.



8. Ready, now you can do the other side.

## NOTES

## NOTES

## NOTES

# ***TOTAL SOURCE<sup>®</sup>***

**Your distributor:**



Manufactured outside the EU for:

**TVH PARTS HOLDING NV**

Brabantstraat 15 • 8790 Waregem • Belgium

T +32 56 43 42 11 • F +32 56 43 44 88 • [info@tvh.com](mailto:info@tvh.com) • [www.tvh.com](http://www.tvh.com)